

PUPIL EQUITY FUND (PEF) PROJECT

INTRODUCTION

Circle’s Pupil Equity Fund (PEF) Project aims to support families of pupils from Craigentenny and St Ninian’s Primary Schools to help reduce the attainment gap by promoting the well-being and potential of children at home, at school and in the community.

To achieve the project’s aims, our Family Outreach Workers adopt a strengths-based and solution-focussed approach in all of the work that they undertake with the children and families they support. This approach allows family members to build on their existing strengths and for staff to offer practical, emotional, relational and connecting support with the whole family.



Some examples of the wide variety of interventions that we carry out on a day-to-day basis are:

- Parenting support around routines and boundaries including mornings and homework
- Supporting children to be involved in more school and community activities
- One-to-one support for children to build coping strategies and resilience
- Supporting parental engagement with school and child planning
- Practical support to improve home conditions
- Supporting children and parents to attend health and other appointments

BENEFICIARIES

The children and families who are supported by this project will be dealing with a variety of challenging circumstances such as poor parental mental health, social isolation and domestic abuse. The project aimed to support 15 families in 2019/20 and over the year supported:

Families	19
Parents	18
Kinship carers	1
Children	28
TOTAL no. of family members	47

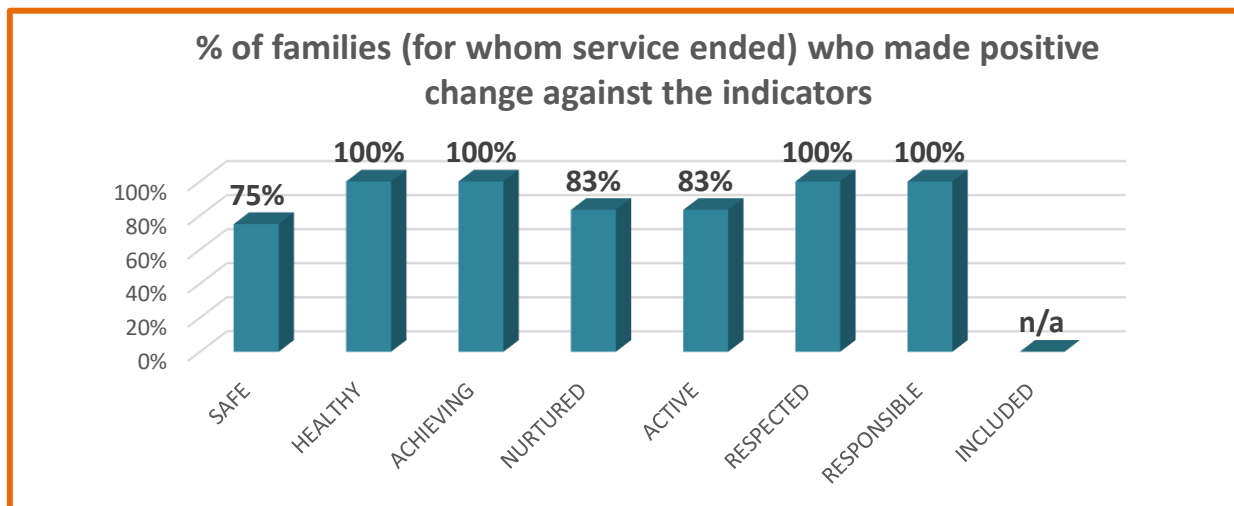
OUTCOMES

Circle works alongside family members to identify their specific support needs and concerns, enabling them to work towards improving their health, wellbeing and resilience.

“The support of circle has made all the difference for my client, enabling her to continue to live with her mum. If it wasn’t for the continued support, the child may well have been accommodated. Instead she can live at home safely.” (Social Worker)

We use the *Getting it right for every child* (GIRFEC) approach which supports children and young people to grow up feeling loved, safe and respected and to realise their full potential. At home, in school or the wider community, every child and young person should be Safe, Healthy, Achieving, Nurtured, Active, Respected, Responsible and Included. These SHANARRI indicators are what we use to measure the progress made by the families we support.

There were 10 families for whom service ended in the year, of which 7 have reported outcomes where positive change was made. This is further detailed below:

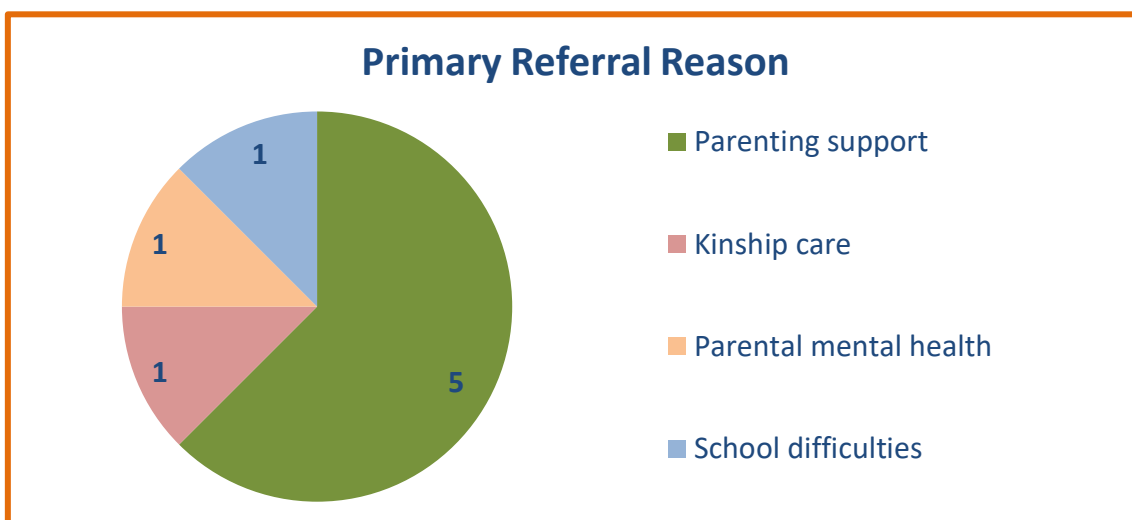


The positive outcomes experienced by families supported by this project include:

- Trusting and healthy relationships developed
- Increased engagement in community resources example
- Improved living conditions
- Children’s boundaries and routines established
- Improved coping strategies and resilience

REFERRAL REASON

Families were referred to PEF in 2019/20 from the two primary schools as detailed below:



Ten cases were closed this year with length of involvement ranging from 12 weeks to 101 weeks. The average length of involvement was 55 weeks.

COMMUNITY CONNECTIONS

Circle’s work is rarely done in isolation. The children and families we work with often experience a wide variety of challenges that require a number of organisations and individuals to work together to help them find their own specific solutions.



PEF has in the last year worked with: The Ripple Project, Children & Families Social Work, The City of Edinburgh Council’s Housing Department, Cedar Network & Scottish Women’s Aid, Barnardo’s, Down’s Syndrome Scotland, school nurses, Turning Point, ADHD team, Holyrood High School, Leith Academy, Active schools, Community Child Health, Maximise, Safer Families, Woman’s own group, CEC Kinship Team, Local Health visiting teams, Active Schools and the Discover Programme.

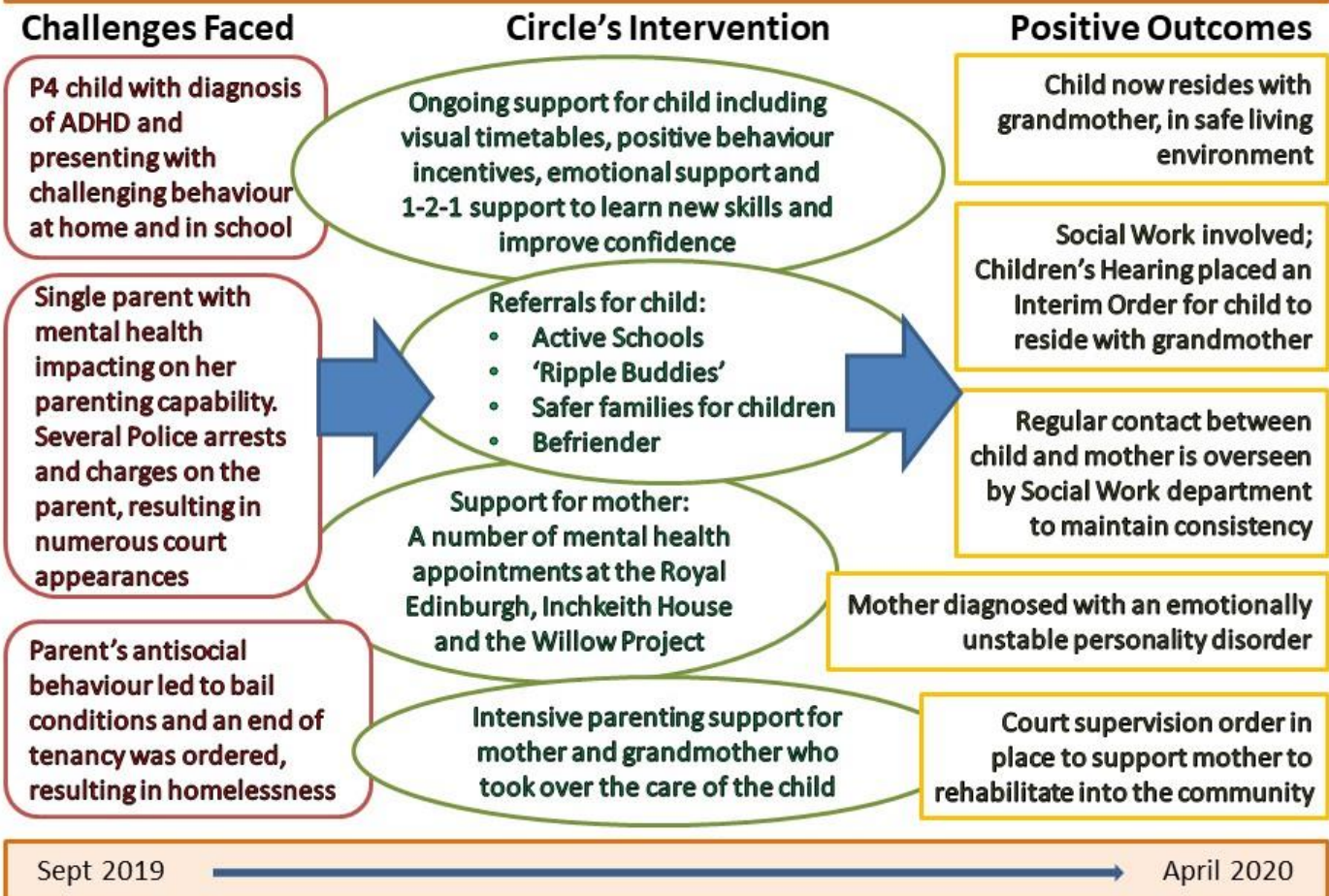
FUNDING

In 2019/20 the project received funding from Craigentenny and St Ninian’s Primary Schools which contributed to one Family Outreach Worker.

“Without a Circle worker I think that I would fall into depression and my family would break up.” (Parent)

CASE STUDY

In 2019/20 we supported 19 families; here is an example of the work we did with one of them...



PROJECT DEVELOPMENT PLAN FOR YEAR AHEAD

Circle's Family Outreach Worker will continue to support families referred by the two primary schools to ensure that children's attendance and attainment is improved.



"The best thing is having someone to talk to. The worker makes me happy."
(Child)

Author: Alex Collop
Date: May 2020